

VersaHaul™



Product Catalog

www.versahaul.com®

(888) 818-9915 or (765) 807-6497

EZRA Distributing, Inc.

Billing Address

3495 Kent Ave. Suite L100
West Lafayette, IN 47906

Shipping Address

9341 S. State Rd. 39
Winamac, IN 46996

Information is subject to change without notice.

Why Use VersaHaul™



Box Design

Our competitor's carriers use a basic "U" shaped rail to support the weight of your bike. This "U" shaped design is more likely to twist and bend over time with extended use. Our superior design will prevent these movements allowing you to transport your bike safely with a decreased possibility of twisting or bending. This will extend the life of your carrier.



Anti-Tilt Lock Bracket Included

The patented anti-tilt lock bracket is designed to increase stability of any hitch mounted product. Differences in paint or powder coat thickness or slight imperfections in the manufacturing process could cause your carrier(s) to move within your hitch. The patented anti-tilt lock bracket addresses these concerns and will eliminate the majority of this movement.



Moveable Rail

You shouldn't have to worry about hauling a spare tire, or having a bumper that's too big. We believe that if your vehicle can take the weight, our carrier should let you haul it.

The VersaHaul™ was designed with a moveable rail, allowing you to move the main rail closer to or farther from your vehicle, giving you the space you need. That's the versatility of a VersaHaul™.



Reversible Rail

The flexibility of a VersaHaul™ doesn't stop at sliding the rail. VersaHaul™ rails are completely reversible, giving you the ability to load the bike from either side. This is ideal for individuals with offset spare tires or ladders on their vehicles.

Why Use VersaHaul™



Towing Hitch

VersaHaul™ is the ONLY motorcycle carrier with a Class III hitch at the end of our carrier. That means you can haul trailers up to 3,000 lbs. behind your bike. No other carrier on the market offers that.



Straps Inline with Suspension

Our tie-down bars give you the ability to align the straps with the suspension of the bike, causing less stress on the suspension while securely strapping your bike into position. A number of our competitors provide tie-down points in the center of the carriers, directly off the main tube. This causes unnecessary stress and over time can damage your bike.



Retractable Tie-Down Bars

We build our carriers with Retractable Tie-Down Bars, so you can easily move them out of the way when not in use. Just pull out the locking pin and slide them in.

With our retractable tie down-bars you are also able to increase or decrease the angle, creating more stability depending on your bike's specific needs.



Four Strong Tie-Down Loops

The tie-down loops are one of the most important parts of the carrier. A wheel-less trailer doesn't do much good if the loops can't support the weight of the bike while you're driving.

Like the rest of our carrier, our loops are 100% steel. You can rest assured your bike is in good hands with VersaHaul™.

Why Use VersaHaul™



Adjustable Wheel Stops

Wheels stops are designed to help stabilize your bike, but they're not very useful if the wheel stop is too far down the rail for your bike. It's important to keep the bike centered on the carrier.

With a VersaHaul™ carrier, even smaller bikes can enjoy the same stability features that larger bikes do.



Wheel Stop Hooks

The Adjustable Wheel Stop is easy to move too. All you have to do is slide the hooks into the slots built into the rail. Fasten the included bolt down and you're ready to go. It takes seconds, not minutes, and it's one of the little details that makes the VersaHaul™ superior to any other carrier on the market.



Included Reflectors

Hitch mounted trailers can cover or obscure your break lights. This could reduce visibility at night, so we include a pair of reflectors with every carrier.



Optional Taillight Kit

Some states require you to have a taillight kit if you extend an object beyond a certain point on your hitch. If you're worried about visibility, or are required by law to add taillights, grab our taillight kit with optional license plate light. This increases visibility and gives you turn signals, break lights and blinkers on your carrier.

FAQ and Information



VersaHaul™ Display Stand (2 Models)

We offer display stands to our dealers for our motorcycle and mobility scooter carriers. Stable and sturdy, you can show your customers quickly and easily all the advantages VersaHaul™ has to offer.

VH-STAND Model holds one VH-55, VH-55 DM, VH-SPORT, or VH-90 carrier.
VH-STAND MS Model holds one VH-MS or VH-MS XL carrier.

Do you have a single bike system, with a ramp, that will also allow a trailer to be attached?

The VersaHaul single motorcycle carriers are now being manufactured to tow a small vehicle or light trailer. The main tube was not designed to carry tongue weight. It is only suitable for towing trailers and small vehicles where there is no tongue weight exerted on the hitch. The towing capacity of the main tube is 1/3 of the towing capacity of your hitch. Do not tow over 3000 lbs. Visit VersaHaul.com® to find your vehicle towing capacity.

My bike's tires are 7 inches wide. Everything I have read indicates your track is only 5.5 inches wide. Will my bike fit on any of your carriers?

Yes. The entire width of the VH-55 Single Motorcycle carrier's track is 6.25 inches wide with 45 degree angles on both sides, allowing for even 8 inch wide tires to fit safely. Also-Our sport bike carrier allows for even the widest tires to fit securely, and it's wide ramp is interchangeable with the VH-55 Single Motorcycle carrier.

For a full FAQ section, and other information, visit www.VersaHaul.com®.

Carrying Capacity Chart

Vehicle carrying capacity = weight a listed truck can carry using a VersaHaul™. Suspension enhancing devices such as air shocks can increase carrying capacity. The weight of the VersaHaul™ carrier has already been considered.

Make	Model	VH-55	VH-55 DM	VH-90	VH-SPORT
Acura	MDX 4dr SUV	255	213	228	237
Audi	Q5 SUV	287	244	259	269
BMW	X3 xDrive28i 4dr SUV	148	107	122	130
Buick	Enclave Leather AWD 4dr SUV	288	247	262	270
Chevrolet	LTZ 4WD Short Bed 4Dr Extended	500	600	677	600
Dodge	Durango RT 2WD 4Dr SUV	408	365	380	390
Ford	F150 FX2 2WD Short Bed	379	337	352	361
GMC	Sierra 1500 Regular Cab	397	354	369	379

Visit www.VersaHaul.com® for a full chart

Consult your owners manual for operating instructions. Do not exceed your vehicle hitch rating. Most Class III hitches are rated for 500 lbs. Most Class IV hitches are rated for 1000 lbs.

Motorcycle Carriers



Single Motorcycle Carrier		VH-55
Specifications:		
Weight:	74 lbs.	Track Width: 6.375 in.
Carrying Capacity:	500 lbs.	Track Length: 71.5 in.
Towing Capacity:	3000 lbs.	
Features:		
<ul style="list-style-type: none"> ● Fits Class III or IV Hitch ● Easily Stores Away 		<ul style="list-style-type: none"> ● Powder Coat Finish ● Reversible Rails



Single Motorcycle Carrier w/ Ramp		VH-55 RO
Specifications:		
Weight:	94 lbs.	Track Width: 6.375 in.
Carrying Capacity:	500 lbs.	Track Length: 71.5 in.
Towing Capacity:	3000 lbs.	Ramp Length: 57.5 in.
Features:		
<ul style="list-style-type: none"> ● Fits Class III or IV Hitch ● Easily Stores Away 		<ul style="list-style-type: none"> ● Powder Coat Finish ● Reversible Rails



Motorcycle Ramp Kit		VH-55 RK
Specifications:		
Weight:	17 lbs.	Carry Capacity: 500 lbs.
Ramp Length:	57.5 in.	Ramp Width: 5.5 in.
Features:		
<ul style="list-style-type: none"> ● Fits Class III or IV Hitch ● Easily Stores Away 		<ul style="list-style-type: none"> ● Powder Coat Finish



VH-55 RO



VH-55 RO



VH-55 RO

Double Motorcycle Carriers



Double Motorcycle Carrier VH-55 DM

Specifications:

Weight:	121 lbs.	Track Width:	6.375 in.
Carrying Capacity:	600 lbs.	Track Length:	71.5 in.

Features:

- Fits Class III or IV Hitch
- Powder Coat Finish
- Easily Stores Away
- Reversible Rails



Double Motorcycle Carrier w/ Ramp VH-55 DM RO

Specifications:

Weight:	138 lbs.	Track Width:	6.375 in.
Carrying Capacity:	600 lbs.	Track Length:	71.5 in.
		Ramp Length:	57.5 in.

Features:

- Fits Class III or IV Hitch
- Powder Coat Finish
- Easily Stores Away
- Reversible Rails



VH-55 to VH-55 DM Upgrade Kit VH-KIT

Specifications:

Track Length:	71.5 in.	Track Width:	6.375 in.
---------------	-----------------	--------------	------------------

Features:

- Fits Class III or IV Hitch
- Powder Coat Finish
- Easily Stores Away



VH-55 DM RO



VH-55 DM RO



VH-55 DM with VH-TK LP

Sport Bike Carriers



Sport Bike Carrier		VH-SPORT
Specifications:		
Weight:	89 lbs.	Track Width: 7.875 in.
Carrying Capacity:	600 lbs.	Track Length: 77.5 in.
Towing Capacity:	3000 lbs.	
Features:		
<ul style="list-style-type: none"> ● Fits Class III or IV Hitch ● Easily Stores Away 		<ul style="list-style-type: none"> ● Powder Coat Finish ● Reversible Rails



Sport Bike Carrier w/ Ramp		VH-SPORT RO
Specifications:		
Weight:	111 lbs.	Track Width: 7.875 in.
Carrying Capacity:	600 lbs.	Track Length: 77.5 in.
Towing Capacity:	3000 lbs.	Ramp Length: 71 in.
Features:		
<ul style="list-style-type: none"> ● Fits Class III or IV Hitch ● Easily Stores Away 		<ul style="list-style-type: none"> ● Powder Coat Finish ● Reversible Rails



Sport Bike Ramp Kit		VH-SPORT RK
Specifications:		
Weight:	22 lbs.	Carry Capacity: 600 lbs.
Track Length:	71 in.	Track Width: 7.625 in.
Features:		
<ul style="list-style-type: none"> ● Fits Class III or IV Hitch ● Easily Stores Away 		<ul style="list-style-type: none"> ● Powder Coat Finish ● Handles Wide Tires



ATV and Go-Kart Carriers



ATV and Go-Kart Carrier

VH-90

Specifications:

Weight:	127 lbs.	Track Width:	9.25 in.
Carrying Capacity:	700 lbs.	Track Length:	71.5 in.

Features:

- Fits Class III or IV Hitch
- Powder Coat Finish
- Easily Stores Away
- Reversible Rails



ATV and Go-Kart Carrier w/ Ramp

VH-90 RO

Specifications:

Weight:	166 lbs.	Track Width:	9.25 in.
Carrying Capacity:	700 lbs.	Track Length:	71.5 in.
Ramp Length:	60 in.		

Features:

- Fits Class III or IV Hitch
- Powder Coat Finish
- Easily Stores Away
- Reversible Rails



ATV and Go-Kart Ramp Kit

VH-90 RK

Specifications:

Weight:	39 lbs.	Carry Capacity:	700 lbs.
Ramp Length:	60 in.	Ramp Width:	10 in.

Features:

- Fits Class III or IV Hitch
- Powder Coat Finish
- Easily Stores Away
- Reversible Rails



VH-90 RO



VH-90 RO



VH-90 RO with VH-TK LP

Lawn and Garden Carriers



Lawn & Garden Carrier

Specifications:

Weight:	118 lbs.	Track Width:	9.25 in.
Carrying Capacity:	700 lbs.	Track Length:	71.5 in.

Features:

- Fits Class III or IV Hitch
- Powder Coat Finish
- Easily Stores Away
- Reversible Rails



Lawn & Garden Carrier w/ Ramp

VH-LG RO

Specifications:

Weight:	174 lbs.	Track Width:	9.25 in.
Carrying Capacity:	700 lbs.	Track Length:	71.5 in.
Ramp Length:	60 in.		

Features:

- Fits Class III or IV Hitch
- Powder Coat Finish
- Easily Stores Away
- Reversible Rails



Lawn and Garden Carrier Ramp Kit

VH-LG RK

Specifications:

Ramp Length:	60 in.	Ramp Width:	8 in.
--------------	--------	-------------	-------

Features:

- Fits Class III or IV Hitch
- Powder Coat Finish
- Easily Stores Away
- Handles Wide Tires

Scooter and Jet Ski Carriers



Single 50cc Scooter Carrier w/ Ramp VH-50cc

Specifications:

Weight:	56 lbs.	Track Width:	4.56 in.
Carrying Capacity:	250 lbs.	Track Length:	62 in.
Ramp Length:	60 lbs.	Ramp Width:	4.27 in.

Features:

- Fits Class II, III or IV Hitch
- Powder Coat Finish
- Easily Stores Away
- Store Luggage



VH-50cc



VH-JS



Jet Ski Carrier VH-JS

Specifications:

Carrying Capacity:	500 lbs.	Weight:	69 lbs.
Vert. Neck Length:	0-10.5 in.	Between Rails:	4-24 in.
Horiz. Neck Length:	0-20 in.	Rail Length:	57 in.
Towing Capacity:	3000 lbs.		

Features:

- Fits Class III or IV Hitch
- Powder Coat Finish
- Easily Stores Away
- For Stand-up Models

Mobility Scooter Carriers



Mobility Carrier		VH-MS
Specifications:		
Weight:	102 lbs.	Tray Width: 27.75 in.
Carrying Capacity:	500 lbs.	Tray Length: 46.5 in.
Ramp Length	61 in.	Tray Depth: 4 in.
Features:		
<ul style="list-style-type: none"> ● Fits Class II, III or IV Hitch ● Easily Stores Away 		<ul style="list-style-type: none"> ● Powder Coat Finish ● Folds Flat



VH-MS



VH-MS XL



Mobility Scooter XL Carrier		VH-MS XL
Specifications:		
Weight:	126 lbs.	Tray Width: 32.75 in.
Carrying Capacity:	500 lbs.	Tray Length: 58.38 in.
Ramp Length:	61 in.	Tray Depth: 4 in.
Features:		
<ul style="list-style-type: none"> ● Fits Class III or IV Hitch ● Easily Stores Away 		<ul style="list-style-type: none"> ● Powder Coat Finish ● Folds Flat

Features



VH-MS



Adjustable leveling bolt.



Anti-tilt lock bracket stabilizes the carrier.

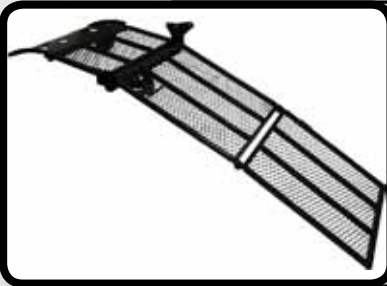


Simply pull the knob to raise and lower the carrier.



Ramp snaps into place and is held by spring loaded stainless steel pull latches.

Mobility Scooter Ramp



Mobility Scooter Safety Ramp

VH-SR

Specifications:

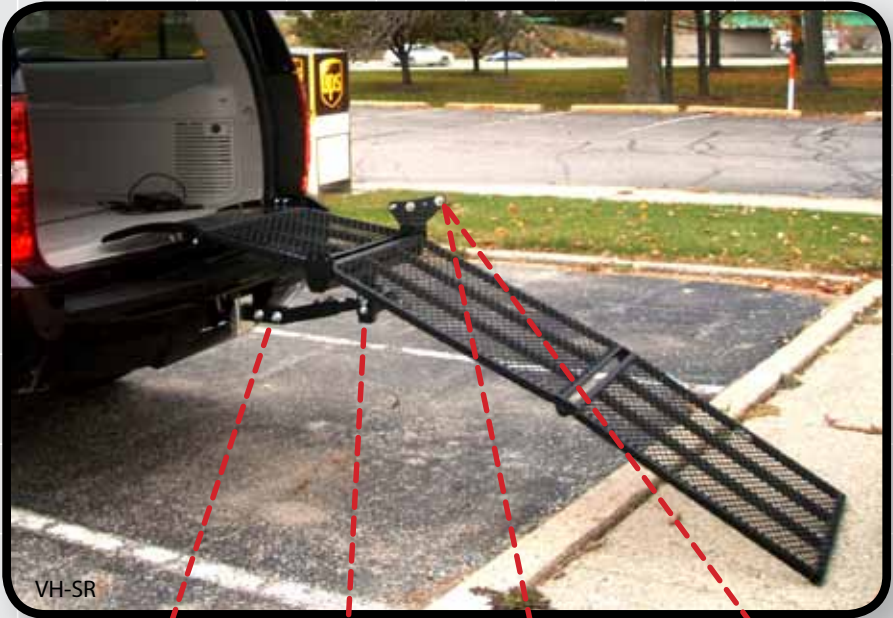
Weight:	80 lbs.	Ramp Width:	28 in.
Carrying Capacity:	350 lbs.	Ramp Length:	89.5 in.
Hitch - Upper Ramp:	15-18 in.	Hitch - Bar:	15-20 in.

Features:

- Fits Class III Hitch
- Powder Coat Finish
- Easily Stores Away
- Folds Flat



Features



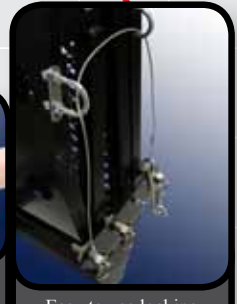
Extends to ensure that it clears your bumper.



Adjust ramp height to fit your vehicle.



Ramps lock into place and are held by spring loaded stainless steel pull latches.



Easy to use locking mechanism ensures ramps are secure

Cargo Carriers



Storage Bin Carrier

VH-SB

Specifications:

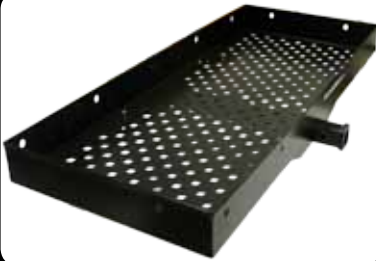
Weight:	59 lbs.	Bin Width:	21.5 in.
Carrying Capacity:	350 lbs.	Bin Length:	37.5 in.
Towing Capacity:	3000 lbs.	Bin Height:	15 in.

Features:

- Fits Class III or IV Hitch
- Powder Coat Finish
- Easily Stores Away



Cargo Carriers



Steel Cargo Tray

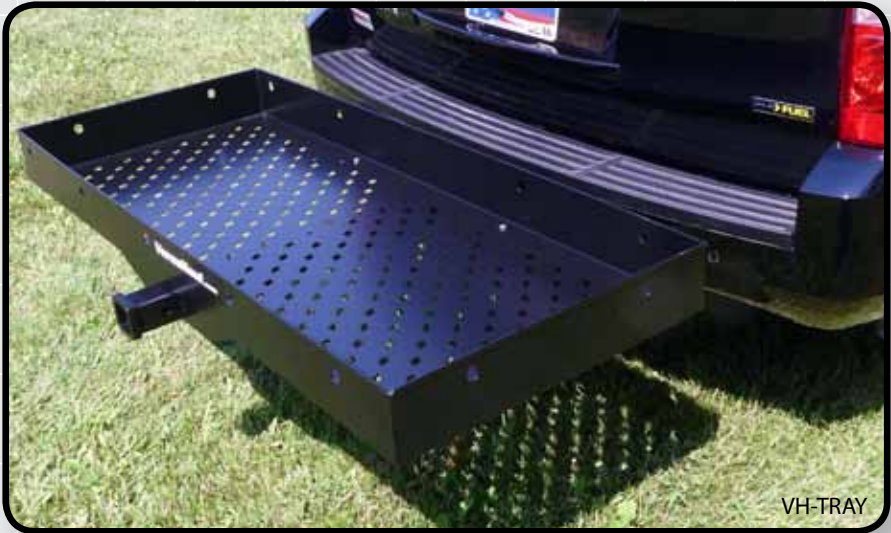
VH-TRAY

Specifications:

Weight:	65 lbs.	Tray Width:	25 in.
Carrying Capacity:	500 lbs.	Tray Length:	58 in.
Towing Capacity:	3000 lbs.	Rim Height:	5.5 in.

Features:

- Fits Class III or IV Hitch
- Powder Coat Finish
- Easily Stores Away



VH-TRAY

Accessories



Taillight Kit w/ License Plate Light

Model: VH-TK LP

- For VH-55, VH-55 DM, VH-90 and VH-SPORT
- Easily Sticks to Carrier or Fastened by Screws



Hitch Riser Class III

Model: VH-HR3

- 400 lbs Tongue Weight
- Rises 4"



Hitch Riser Class II

Model: VH-HR2

- 350 lbs Tongue Weight
- Rises 5"



Hitch Extender Class III

Model: VH-HE3

- 400 lbs Tongue Weight
- Extends 8"



Hitch Extender Class II

Model: VH-HE2

- 350 lbs Tongue Weight
- Extends 7"



Storage Bin Carrier Tube

Model: VH-SB Tube

- 350 lbs. Load Limit
- 3,000 lbs. Towing Limit
- Modify a bin to fit
- Includes bolts

Accessories



Hitch Mounted Brake Light

Model: VH-BL

- Fits Any Class III Hitch
- Cable Length: 6"

VH-BL



VH-070 HD



Heavy Duty Anti-Tilt Lock Bracket

Model: VH-070 HD

- Fits Any Class III Hitch
- Clear Zinc Finish



Heavy Duty Tie-Down Straps

Model: V-STRAP

- 1" x 6' Ratchet and Cambuckle Straps
- 2 x Ratchet, 2 x Cambuckle and 4 x Tie-Down Loops



Sport Carrier Wheel Chock

Model: VH-CHOCK

- Fits a VH-SPORT Carrier
- Adapter Plate Included

VersaHaulTM

Phone: (888) 818-9915
or
(765) 807-6497

Fax: (765) 807-6478

Email: versahaul@versahaul.com

EZRA
Distributing Inc.

Billing Address

3495 Kent Ave. Suite L100
West Lafayette, IN 47906

Shipping Address

9341 S. State Rd. 39
Winamac, IN 46996